

UNIT 2: INTEGRATION OF THE NATIONAL INCIDENT MANAGEMENT SYSTEM TO FIREGROUND MANAGEMENT

Slide 2-1

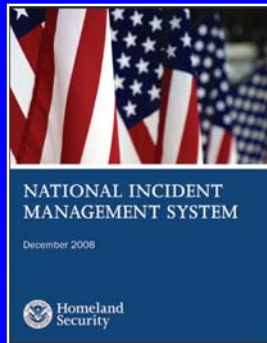
OBJECTIVES

The students will:

- State the purpose of the National Incident Management System (NIMS).
- Identify the elements of NIMS that provide the template for managing incidents.
- State the purpose of using the Incident Command System (ICS) effectively.
- Identify the ICS positions and state their functions.

Slide 2-2

NATIONAL INCIDENT MANAGEMENT SYSTEM



Slide 2-3

WHAT IS THE NATIONAL INCIDENT MANAGEMENT SYSTEM?

- Systematic approach
- Set of preparedness concepts
- Standardized resource management procedures
- Scalable for use in all incidents
- Dynamic system



Slide 2-4

WHAT THE NATIONAL INCIDENT MANAGEMENT SYSTEM IS NOT

- Response plan
- Used only in large-scale incidents
- Communications plan
- Limited applicability
- Only the ICS or an organization chart
- A static system



Slide 2-5

THE NATIONAL INCIDENT MANAGEMENT SYSTEM INCLUDES

- Compliance
- Training
- Standards and technology
- Resource management/
Mutual aid--standardized procedures for resource management processes



Slide 2-6

COMMAND AND MANAGEMENT

- Command and management envision the most familiar part of NIMS--the ICS.
- Organizations must take steps to institutionalize the use of ICS during prevention and response efforts.
- Actions to institutionalize the use of ICS take place at two levels--policy and organizational/operational.



Slide 2-7

THE NATIONAL INCIDENT MANAGEMENT SYSTEM ONGOING MANAGEMENT AND MAINTENANCE

- Incident Management System Integration Division (IMSID)
- Supporting technologies

Slide 2-8

USE THE INCIDENT COMMAND SYSTEM EFFECTIVELY

- ICS allows you to create subordinate positions.
- The Incident Commander (IC) can then delegate responsibility and maintain span of control.
- Subordinate positions are to be used IF they are needed.

Slide 2-9

FIRST OFFICER IN IS INITIAL INCIDENT COMMANDER

- "What starts well, ends well"
- Initial IC:
 - Organizes incident
 - Recognizes scope
 - Must have ability to deal with changes
 - Updates Incident Action Plan (IAP)

Slide 2-10

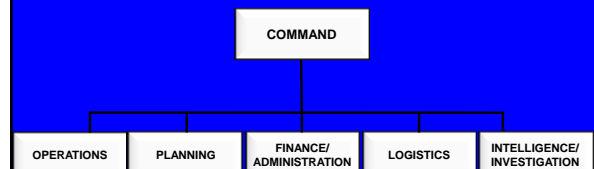
COMPANY OFFICER'S ROLE WHEN NOT THE INCIDENT COMMANDER

Must understand the system if they are to do an effective job and the system is to work



Slide 2-11

GENERAL STAFF



Slide 2-12

COMMAND

COMMAND

Responsible for:

- Overall management
- Objectives, strategy, and tactics
- Firefighter safety
- Success of incident activities
- Command role is filled by IC
- Established at every incident

Slide 2-13

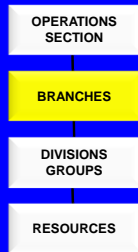
OPERATIONS



- Accomplishes strategy
- Directs tactics
- Assists in development of IAP

Slide 2-14

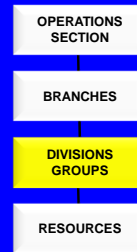
BRANCHES



- Branches are established when the number of Divisions or Groups exceed span of control
- Branches may be:
 - Functional
 - Geographic

Slide 2-15

DIVISIONS/GROUPS

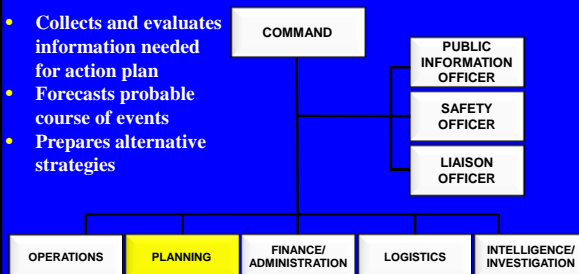


- Established when the number of resources exceed span of control.
- Divisions are established to divide incident into geographic areas.
- Groups are used to divide incident into functional areas.

Slide 2-16

PLANNING

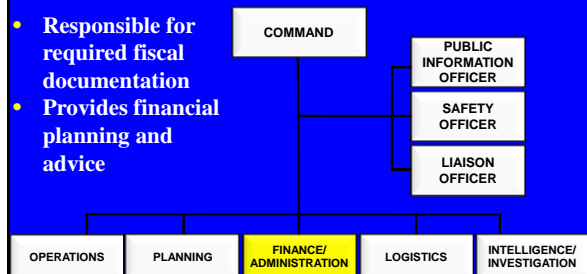
- Collects and evaluates information needed for action plan
- Forecasts probable course of events
- Prepares alternative strategies



Slide 2-17

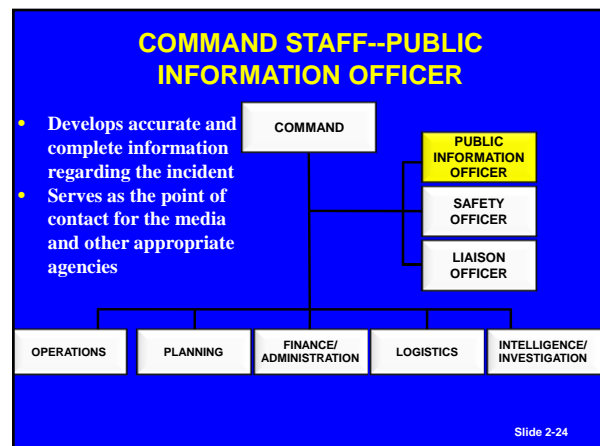
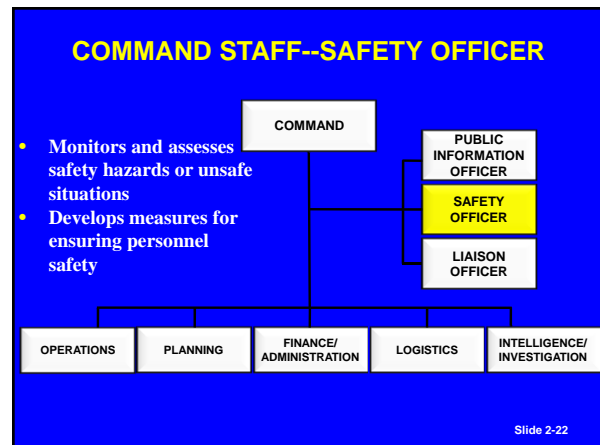
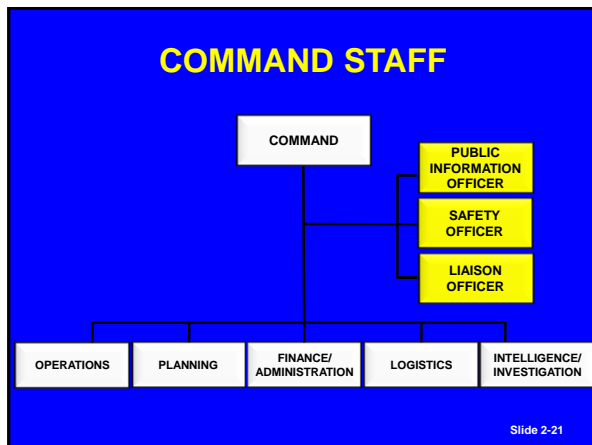
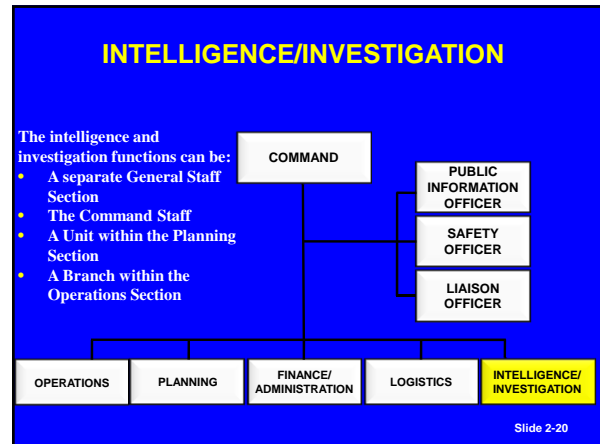
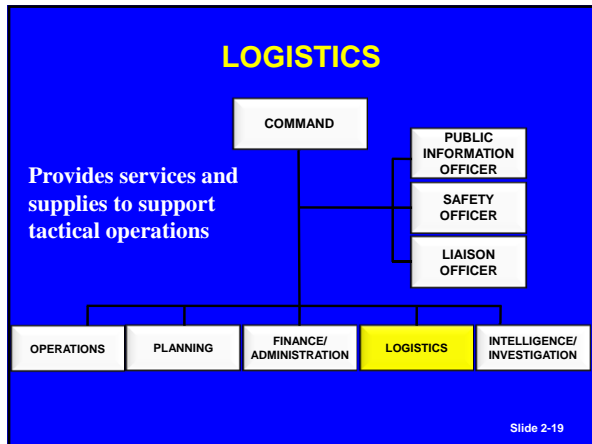
FINANCE/ADMINISTRATION

- Responsible for required fiscal documentation
- Provides financial planning and advice



Slide 2-18

DECISION MAKING FOR INITIAL COMPANY OPERATIONS



SUMMARY

In this unit you reviewed the elements of NIMS and ICS.

Slide 2-25